



3  2  2 

**Radi Estates**  
**9275 2945**

**Contact** Steve Radi  
0411755788

**Price** Offers \$539,000

**Type** House

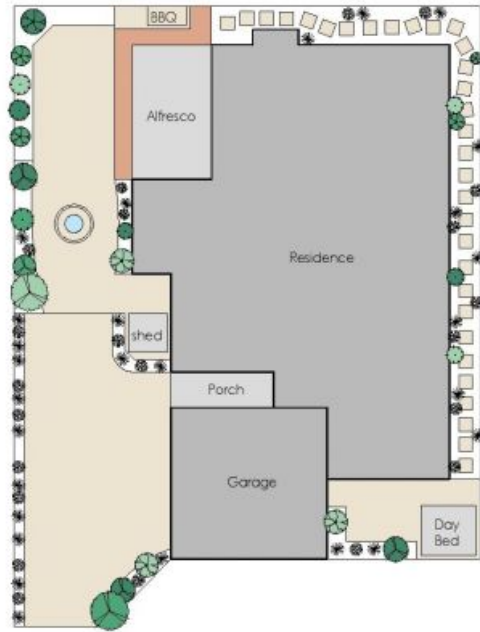
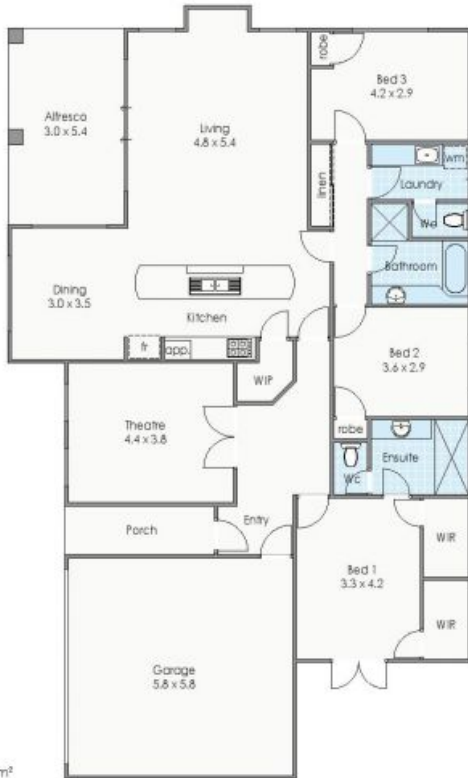
**Sold Date** 12/06/2019

**25A Kennedy Road Morley**  
**UNDER OFFER PRIOR TO OPEN - OPEN CANCELLED**

A truly tranquil and unique opportunity to secure this large and private rear home is now available. Enjoy all the benefits of being ever so close to Bedford ? without the price tag. 3 bedrooms of genuine queen size proportions and two bathrooms, plus a sensationally spacious open plan living area with an expansive kitchen that seamlessly connects to the private outdoor area just perfect for the modern contemporary lifestyle. A wonderfully warm home boasting an ideal floorplan with multiple living zones set on Sydney Blue Gum timber flooring, you will fall in love with the incomparable space and serenity on offer here. Make the move today and enjoy living in this sought-after location with all the amenity one could desire.

Specific Highlights of this home include:

Expansive open plan kitchen, family and meals with direct access to decked alfresco and courtyard/garden



Approximate Areas

Residence:	169m <sup>2</sup>
Garage:	36m <sup>2</sup>
Alfresco:	16m <sup>2</sup>
Porch:	6m <sup>2</sup>
<b>Total area:</b>	<b>227m<sup>2</sup></b>

These plans have been produced for marketing purposes and are approximate only. They are not suitable for other uses. [www.cribcreative.com.au](http://www.cribcreative.com.au)



**25a Kennedy Road, Morley**