



3 2 1

## Radi Estates 9275 2945

**Contact** Steve Radi  
0411755788

**Price** \$515,000

**Type** Townhouse

**Sold Date** 18/04/2022

**Land** 174 m2

**Building Size** 98 m2

## 36/15 Jugan Street Mount Hawthorn Love the Location, Live the Lifestyle

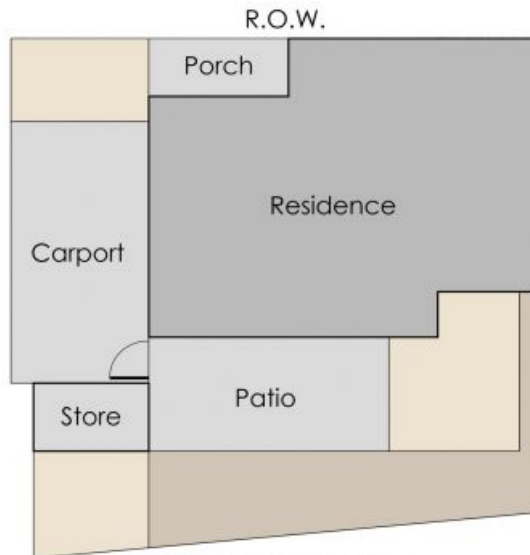
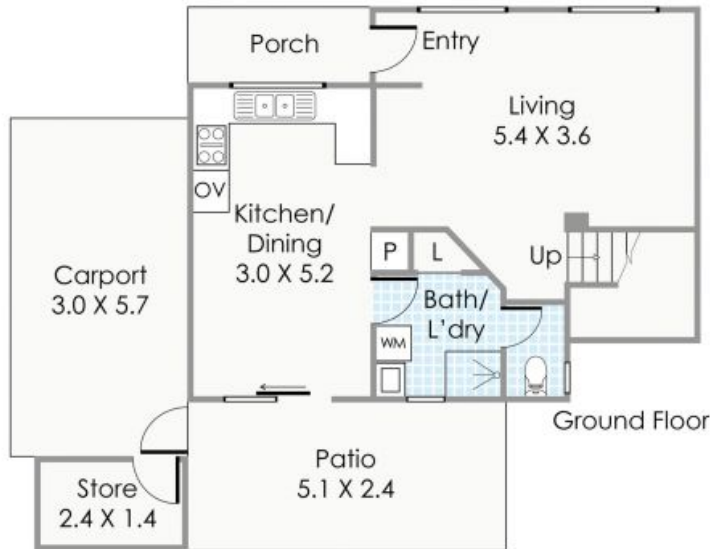
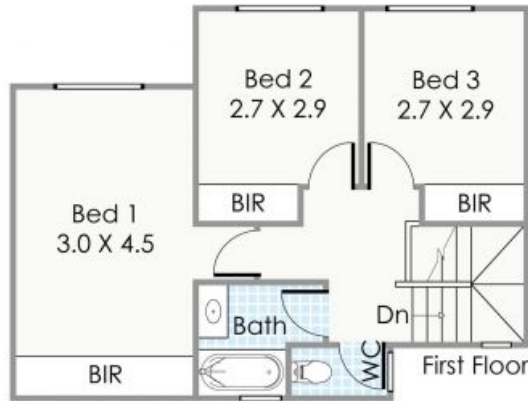
**\*\*Immaculate Strata Group\*\*** Why buy an apartment when you can secure townhouse living on land at such affordable pricing in this sensational location!

Lose the car, lock in the lifestyle and get out there and get going. Right sizing doesn't get any better whether you are starting up or slowing down, this perfectly sized townhouse in an extremely tidy group that is so spectacularly located, will have you hopping and skipping wherever and whenever.

Offering good sized rooms both downstairs and upstairs, with all bedrooms upstairs and a second shower downstairs, comfort and convenience will make for effortless everyday living.

Specific Highlights Include:

Specific



Approximate Areas

Ground Floor:	49m <sup>2</sup>
First Floor:	49m <sup>2</sup>
Carport:	17m <sup>2</sup>
Patio:	12m <sup>2</sup>
Porch:	4m <sup>2</sup>
Store:	3m <sup>2</sup>

Total Strata Lot: 174m<sup>2</sup>

This floorplan is for illustration purposes only to show the layout of the property. Whilst every effort has been made to ensure the accuracy of this floor plan, all measurements, and any other information shown are an approximate interpretation only. Measurements and total areas do not include or account for wall thickness or roof area under eaves. Clib Creative will not be held liable or responsible for any error, omission, misrepresentation or use of any information shown on the final floor plan. Not to be used for any other purpose.  
www.clibcreative.com.au



36/15 Jugan Street, Mount Hawthorn

Total Area: 134m<sup>2</sup>