

3 2 3

## Radi Estates 9275 2945

**Contact** Steve Radi  
0411755788

**Price** From \$519,000

**Type** House

**Sold Date** 16/07/2022

**Land** 427 m2

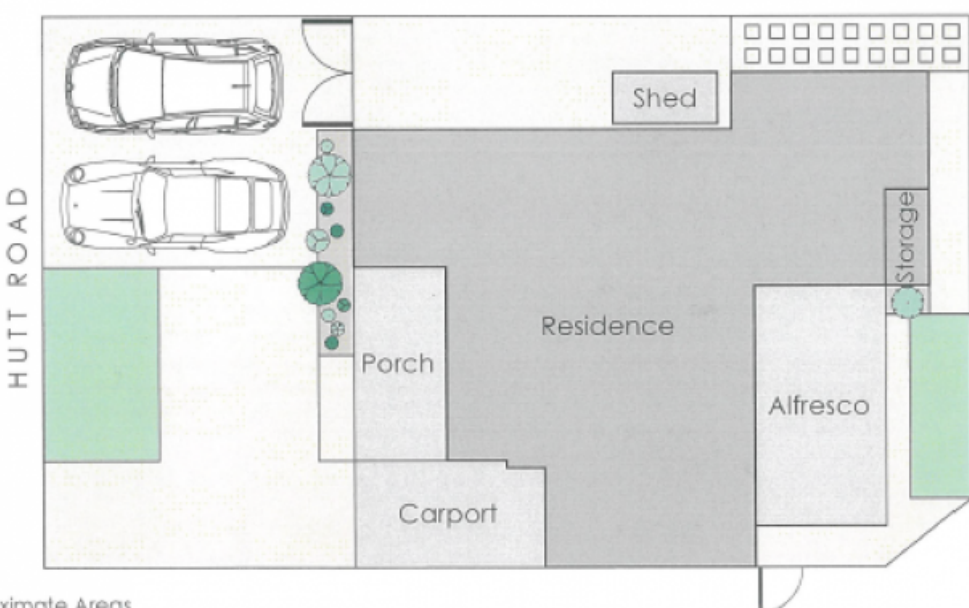
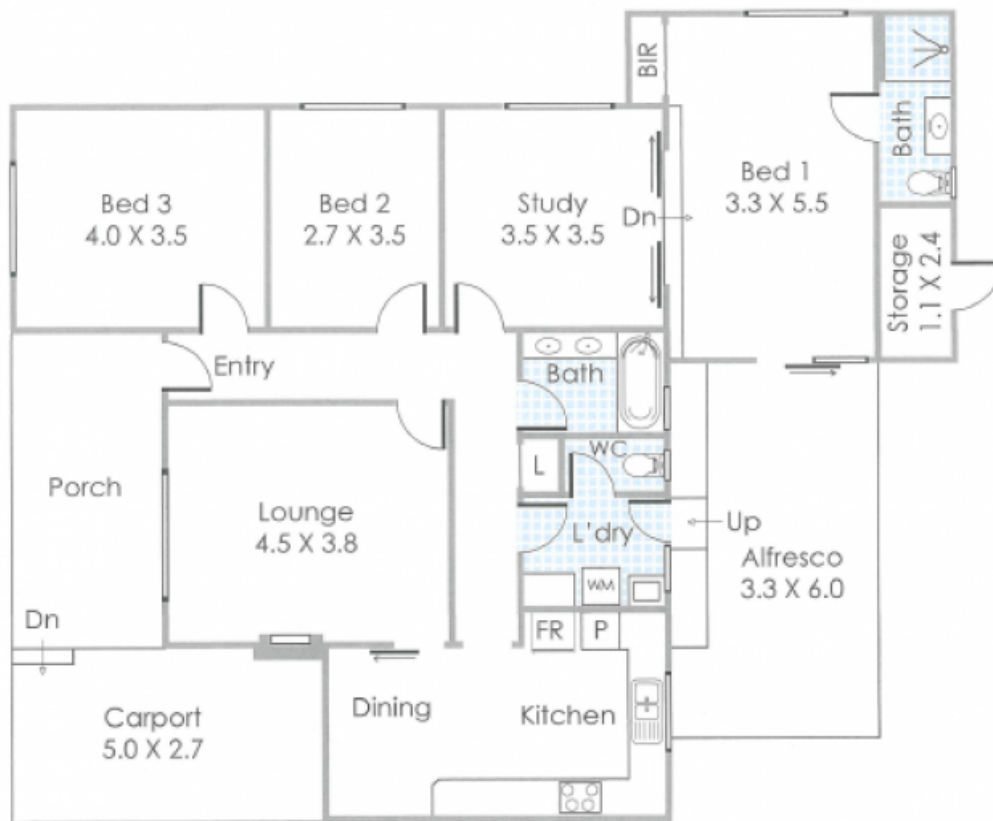
**Carparks** 1

## 33 Hutt Road Morley Prime Morley Position

Residing in one of Morley's most sought-after streets, this contemporary domain promises peaceful and private low maintenance living in a coveted Morley locale. As you reminisce back to the early 1960's you will be presented with a home that offers inviting original proportions and the timeless character features that we all love. A fresh, functional and flexible floorplan of generous proportions complements the homes formal interiors, all whilst preserving that gorgeous old school aura. From the solid timber flooring and timber trimmings throughout the original home, to the stunning and stylish kitchen and more, a wonderful blend of contemporary and character finishes have combined just seamlessly for those craving a little more living.

Distinct highlights of this home include:

- Stunning and stylish kitchen that showcases sleek white contemporary cabinetry
- Renovated and roomy bathroom with double basin vanity and bathtub
- Flexible floorplan that offers 3 bedrooms PLUS study or 4 bedrooms as you please
- Gorgeous old school feel Formal lounge room that is very substantial in size
- Separate laundry and lockup storeroom, PLUS sizeable storage shed
- Great sized block of approximately



Approximate Areas

Residence:	116m <sup>2</sup>
Carport:	14m <sup>2</sup>
Porch:	12m <sup>2</sup>
Alfresco:	20m <sup>2</sup>
Storage:	3m <sup>2</sup>
<b>Total Area:</b>	<b>165m<sup>2</sup></b>

This floor plan is for illustration purposes only to show the layout of the property. Whilst every effort has been made to ensure the accuracy of this floor plan, all measurements, and any other information shown are an approximate interpretation only. Measurements and total areas do not include or account for wall thickness or roof area under eaves. Ctrip Creative will not be held liable or responsible for any error, omission, misrepresentation or use of any information shown on the final floor plan. Not to be used for any other purpose.  
www.ctripcreative.com.au



**33 Hutt Road, Morley**