






## 64 Ruby Street North Perth WA

4  2  2 

This double-storey North Perth residence effortlessly blends modern form and function and is ideally positioned to deliver an abundance of lifestyle benefits right on the doorstep of the Perth CBD. A prominent street elevation is complemented by gorgeous views of the City sights ideal for those that feel like toddling in or maybe getting in the mood to "twinkle" out.

Stumbling distance to a host of inner-city precincts, if you like getting a bit personal with your precinct and your property, then this opportunity to slip in and out with genuine comfort and contemporary convenience is not to be missed.

Step inside and be greeted by light-filled living zones that offer a seamless flow between the indoors and outdoors. The heart of the home is the black stone topped kitchen just ideal when hosting friends and family. Upstairs, generously sized bedrooms offer peace and privacy, and the master suite features a spacious balcony with skyline views.

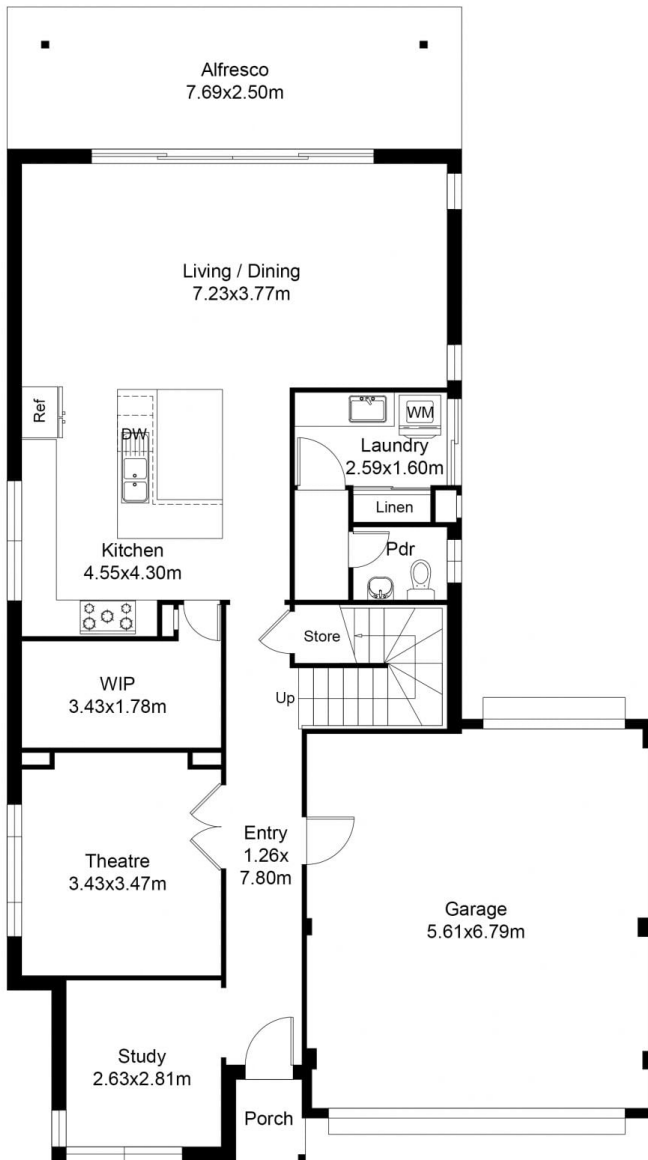
[For full version visit the website](https://www.radiestates.com)

**Type** : House

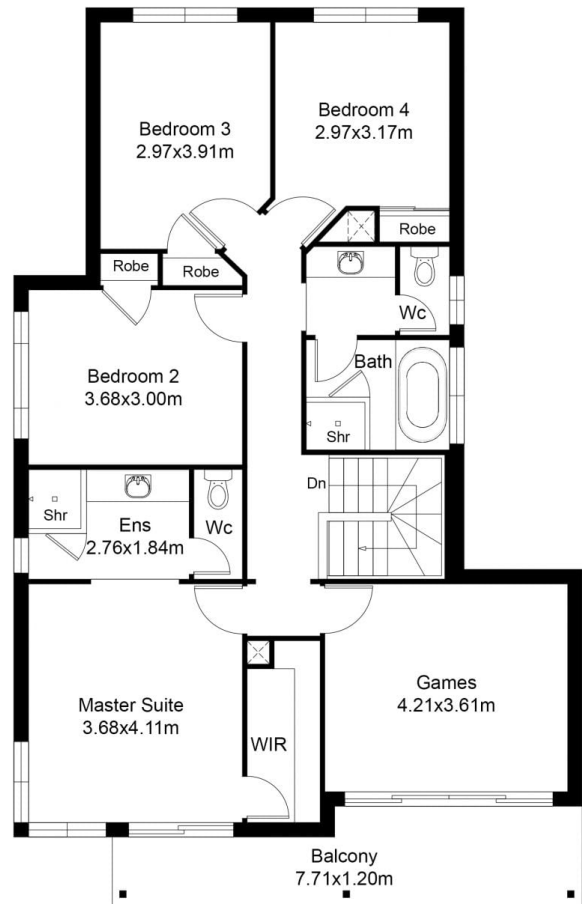
**View** : <https://www.radiestates.com/8419085>



**Steve Radi**  
**0892752945**



GROUND FLOOR PLAN



UPPER FLOOR PLAN

Ground Floor	
Ground	108.66 m <sup>2</sup>
Garage	35.37 m <sup>2</sup>
Alfresco	18.46 m <sup>2</sup>
Store	4.05 m <sup>2</sup>
Porch	1.62 m <sup>2</sup>
First Floor	
Upper	111.09 m <sup>2</sup>
Balcony	11.06 m <sup>2</sup>
Total	291.11 m <sup>2</sup>

This floor plan including furniture, fixture measurements and dimensions are approximate and for illustrative purposes only. BoxBrownie.com gives no guarantee, warranty or representation as to the accuracy and layout. All enquiries must be directed to the agent, vendor or party representing this floor plan.

64 Ruby Street North Perth